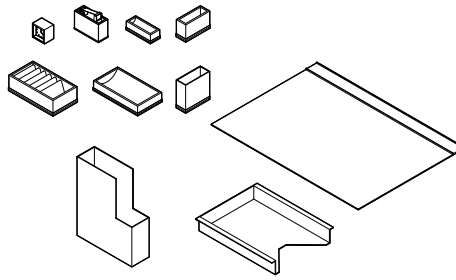


# Executive Office Tools

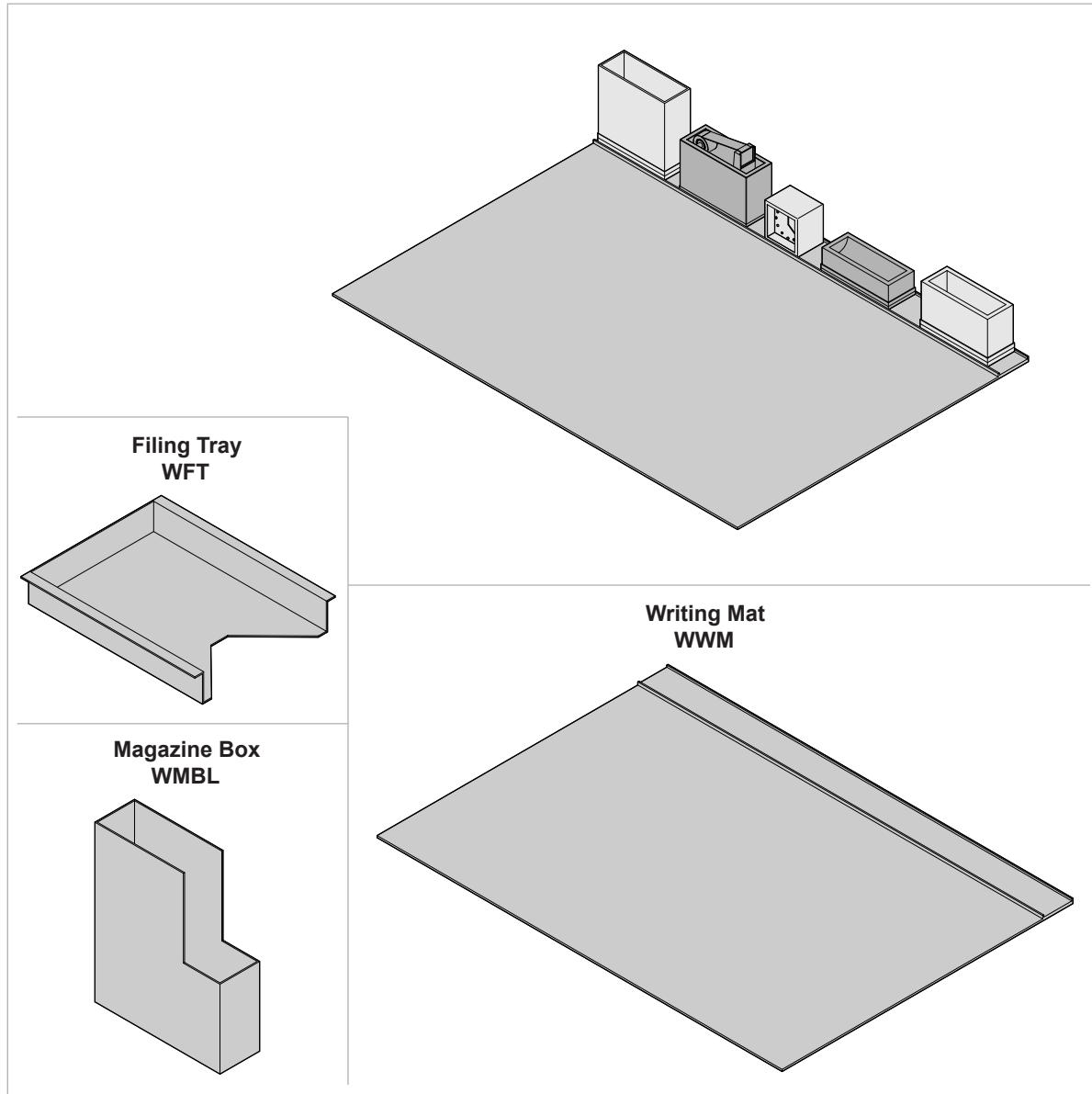
## Installation Instructions

19376901 Rev B Page 1 of 2

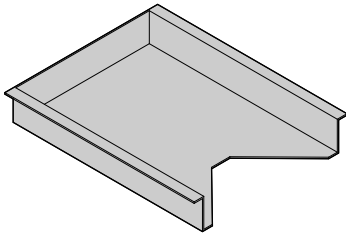


### Executive Office Tools

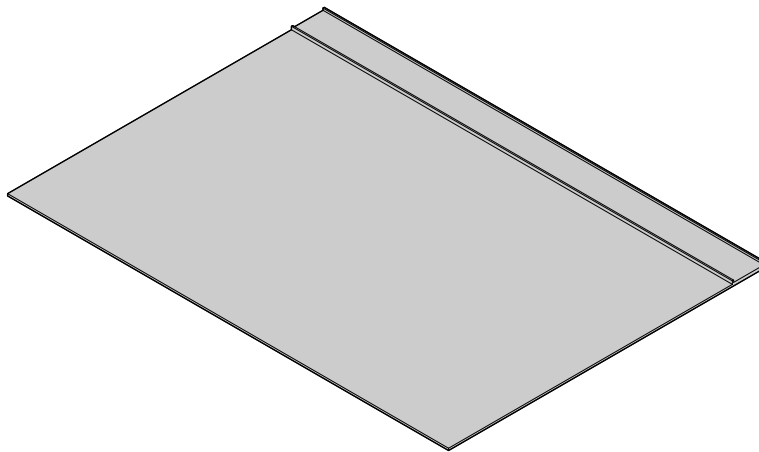
WBCB	WMBL
WPH	WWM
WNPC	WTD
WDC	WPCH
WFT	WMFB



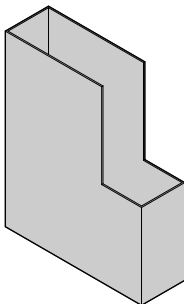
**Filing Tray  
WFT**



**Writing Mat  
WWM**



**Magazine Box  
WMBL**



For a better day at work.™

# details®

A STEELCASE COMPANY

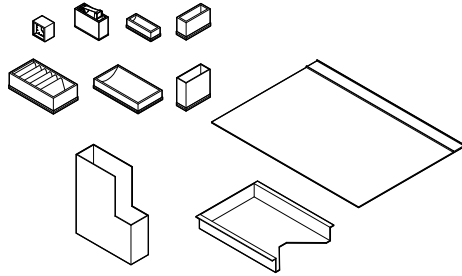
P.O. Box 1967 / CD-5E / Grand Rapids, MI 49501-1967 / [www.details-worktools.com](http://www.details-worktools.com)

©2009 Office Details Inc. All rights reserved. Printed in U.S.A. 9/09

# Executive Office Tools

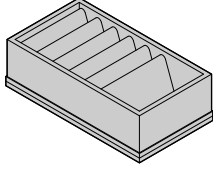
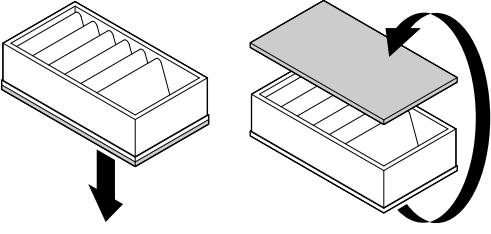
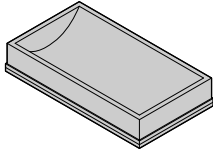
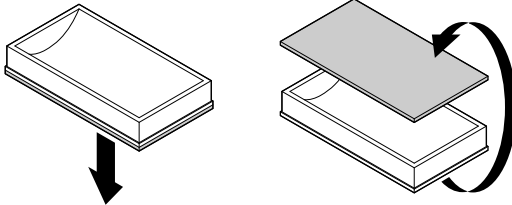
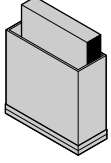
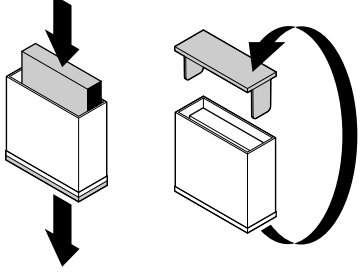
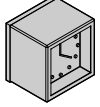
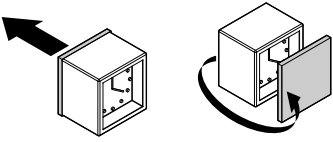
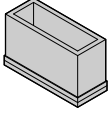
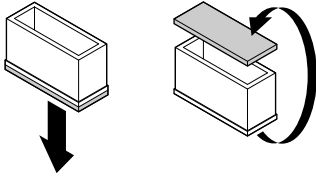
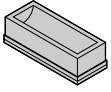
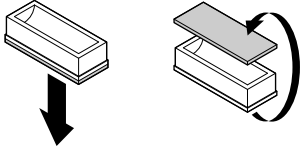
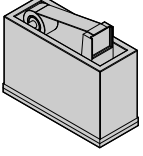
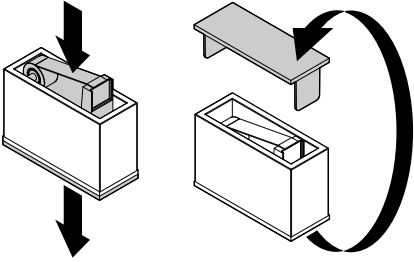
## Installation Instructions

19376901 Rev B Page 2 of 2



### Executive Office Tools

WBCB	WMBL
WPH	WWM
WNPC	WTD
WDC	WPCH
WFT	WMFB

<p><b>Business Card Box</b> WBCB</p> 		
<p><b>Pen Holder</b> WPH</p> 		
<p><b>Note Paper Container</b> WNPC</p> 		<p><b>Desk Clock</b> WDC</p>  
<p><b>Multi Functional Box</b> WMFB</p> 		
<p><b>Paper Clip Holder</b> WPCH</p> 		
<p><b>Tape Dispenser</b> WTD</p> 		<p>Clock Instructions:</p> <ol style="list-style-type: none"> <li>1. Remove the isolation strip between battery and contacts, to begin use.</li> <li>2. Set the time with the knob on the right, indicated with a clock symbol.</li> <li>3. Set the alarm with the knob on the left, indicated with a speaker symbol.</li> <li>4. The alarm can be activated by pulling out the metal pin.</li> </ol> <p><b>NOTE:</b> The knobs should only be turned in the direction indicated by the arrows.</p>